

horizon north

Open Lodges





TABLE OF CONTENTS

Acho Horizon Lodge	3
Chin Inn Lodge	4
Crossroads Lodge	5
Halfway River Mile 127 Lodge	6
Iosegun Lake Lodge	7
Kobes Creek Lodge	8
Montney 98 Lodge	9
Musreau Lodge	10
Sanataa Lodge	11
Simonette Lodge	12
Wapiti Lodge	13
Watson Lodge	14





Acho Horizon Lodge

Fully equipped workforce accommodations well-situated north of Fort Nelson.

Your crews face some of the most demanding working conditions imaginable. That's why Horizon North believes providing a comfortable, safe, friendly home away from home at Acho Horizon Lodge is critical to your operation.

When you stay at Acho Horizon Lodge, you can count on an exceptional guest experience from start to finish – no matter the length of your stay. From the expertly prepared hearty meals and take-away lunches to safe and quiet sleeping accommodations to amenities like the fitness centre and recreation room, we understand the importance of our facility in helping to drive peak performance and productivity for your team.

Overview

Located north of Fort Nelson, British Columbia near key natural gas projects, Acho Horizon Lodge is ideal for companies looking to minimize travel logistics and costs through convenient accommodations.

A Horizon North-owned and operated Open Lodge, Acho Horizon features four executive style rooms complete with private washroom, 96 Jack and Jill rooms with semi-private washroom, and 100 central private style rooms. Three nutritious meals are prepared each day by our chefs on site.

Features

- Catered dining facility
- Fitness centre
- Recreation room
- Wireless internet
- Laundry facilities
- Housekeeping services

Amenities

- Premium mattress
- Desk, dressers and night tables
- Satellite TV in every room
- Baseboard heaters in each room
- Private and shared bathrooms
- All-inclusive dining

Directions to Acho Horizon Lodge from Fort Nelson

1. Travel North from Fort Nelson on Alaska Highway 97 for 25
2. km. Turn right on Highway 77 (Simpson Trail).
3. Travel on Highway 77 to KM 99, where you will arrive at Acho Horizon Lodge.

Lodge Coordinates:

GPS: 59.710417° - 123.103125°

BC NTS: A 59-1 / 094 O 11

Book A Room With Us Today

openlodges@dexterra.com

Horizon North
1-866-305-6565
dexterra.com





Chin Inn Lodge

Well-appointed accommodations located close to the Hamburg Oilfield area.

Your crews face some of the most demanding working conditions imaginable. That's why Horizon North believes providing a comfortable, safe, friendly home away from home at Chin Inn Lodge is critical to your operation.

When you stay at Chin Inn Lodge, you can count on an exceptional guest experience from start to finish – no matter the length of your stay. From the expertly prepared hearty meals and take-away lunches to safe and quiet sleeping accommodations to amenities like the fitness centre and recreation room, we understand the importance of our facility in helping to drive peak performance and productivity for your team.

Overview

Located in the heart of Peace Country, Northern Alberta, Chin Inn is the only full-service camp in the Chinchaga/ Hamburg Oilfield area. Our lodge is ideal for companies looking to minimize travel logistics and costs through accommodations that are convenient to their project site.

A Horizon North operated Open Lodge, Chin Inn features 100 executive style rooms and 78 jack & jill rooms. Three nutritious meals are prepared each day by our chefs on site, as well as a weekly steak night.

Features

- Catered dining facility
- Fitness centre
- Recreation room
- Wireless internet
- Laundry facilities
- Housekeeping services

Amenities

- Premium mattress
- Desk, dressers and night tables
- Satellite TV in every room
- Baseboard heaters in each room
- Private and shared bathrooms
- All-inclusive dining

Directions to Chin Inn Lodge from Manning

1. Head north out of Manning on Highway 35 for 23 km to the Chinchaga Forestry Road.
2. Turn left on Chinchaga Forestry Road and drive for approx. 2 hours to KM 151.
3. The Chin Inn Lodge is located on the right hand side of the road.

Lodge Coordinates:

GPS: 57.348006°
 -119.768338° **LSD:** NE-19-96-
 11 W6

Book A Room With Us Today

openlodges@dexterra.com

Horizon North
 1-866-305-6565
dexterra.com





Crossroads Lodge

Comfortable workforce accommodations minutes away from the LNG Canada project.

Your crews face some of the most demanding working conditions imaginable. That's why Gitxaala Horizon North Services believes providing a comfortable, safe, friendly home away from home at Crossroads Lodge is critical to your operation.

When you stay at Crossroads Lodge, you can count on an exceptional guest experience from start to finish – no matter the length of your stay. From the expertly prepared hearty meals and take-away lunches to safe and quiet sleeping accommodations to amenities like the fitness centre and recreation room, we understand the importance of our facility in helping to drive peak performance and productivity for your team.

Overview

Located in Kitimat, British Columbia at the entrance to town on Highway 37, Crossroads Lodge is ideal for companies looking to minimize travel logistics and costs with accommodations that are convenient to the LNG Canada project site.

Operated by Gitxaala Horizon North Services, Crossroads features 700 hotel executive style rooms. Three nutritious meals are prepared each day by our chefs on site and the lodge is accessible by bus for convenience.

Features

- Catered dining facility
- Fitness centre
- Recreation room
- Wireless internet
- Laundry facilities
- Housekeeping services

Amenities

- Beds with premium mattress
- Private bathroom with shower
- Desk, dressers and night tables
- Flat screen satellite TV
- Keyless room entry
- All-inclusive dining
- Accessible by bus

Directions from Terrace Airport to Crossroads Lodge:

1. Turn right when exiting the Terrace Airport onto BC Highway #37 (Dease Lake Highway) and travel south for 53km.

2. When entering Kitimat, turn left onto the Crossroads Access Road, approximately 260m past Forest Avenue.

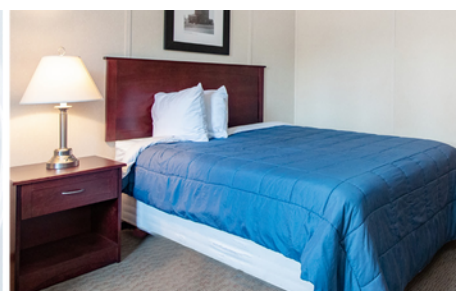
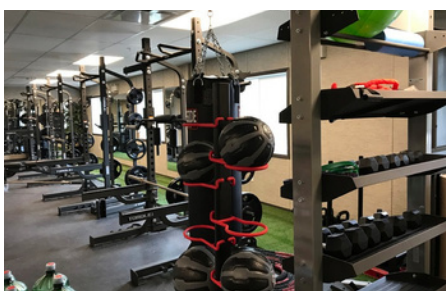
Lodge Coordinates:

GPS: 54.054490°
-128.613147° BC NTS: C 69-A /
103 I 02

Book A Room With Us Today

openlodges@dexterra.com

Gitxaala Horizon North Services
1-866-305-6565
dexterra.com





Halfway River Mile 127 Executive Lodge

Convenient, executive-style workforce accommodations serving projects north of Fort St. John

Your crews face some of the most demanding working conditions imaginable. That's why Halfway River Horizon North Camp Services believes providing a comfortable, safe, friendly home away from home at Halfway River Mile 127 Executive Lodge is critical to your operation.

When you stay at Halfway River Mile 127 you can count on an exceptional guest experience from start to finish – no matter the length of your stay. From expertly prepared hearty meals and take-away lunches to safe and quiet, executive-style sleeping accommodations, we understand the importance of our facility in helping to drive peak performance and productivity for your team.

Overview

Located north of Fort St. John in the heart of the British Columbia Montney resource play, Halfway River Mile 127 Executive Lodge is ideal for companies looking to minimize travel logistics and costs through accommodations that are convenient to their project site. Operated by Halfway River Horizon North Camp Services, the lodge features 300 Executive style rooms and three all-inclusive, nutritious meals prepared each day by our chefs on site.

Features

- Catered dining facility
- Take-away lunches
- Fitness centre
- Recreation room
- Wireless internet
- Laundry facilities
- Housekeeping services

Amenities

- All-inclusive dining
- Bed with premium mattress
- Private bathroom with shower
- Desk, dressers and night tables
- Satellite TV in every room
- Keyless room entry
- Baseboard heaters in each room

Directions to Halfway River Mile 127 Executive Lodge from Fort St. John

1. Travel north from Fort St. John on BC 97-N for 130 km
2. Turn left at the D. Loewen camp sign and arrive at the lodge

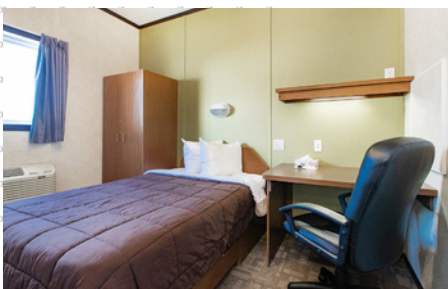
Lodge Coordinates:

GPS: 56.981611°, -122.205528°
BC NTS: D 89-H/094 B 16

Book A Room With Us Today

openlodges@dexterra.com

Halfway River Horizon North Camp Services
1-866-305-6565
dexterra.com





Iosegun Lake Lodge

Stay productive with safe and secure accommodations near Fox Creek.

Your crews face some of the most demanding working conditions imaginable. That's why Horizon North believes providing a comfortable, safe, friendly home away from home at Iosegun Lake Lodge is critical to your operation.

When you stay at Iosegun Lake Lodge, you can count on an exceptional guest experience from start to finish – no matter the length of your stay. From the expertly prepared hearty meals and take-away lunches to safe and quiet sleeping accommodations to amenities like the fitness centre and recreation room, we understand the importance of our facility in helping to drive peak performance and productivity for your team.

Overview

Located minutes north of Fox Creek, Iosegun Lake Lodge is ideal for companies looking to minimize travel logistics and costs through accommodations that are convenient to their project site.

A Horizon North-owned and operated Open Lodge, Iosegun Lake features 300 executive style rooms, as well as three nutritious meals prepared each day by our chefs on site.

Features

- Catered dining facility
- Fitness centre
- Recreation room
- Wireless internet
- Laundry facilities
- Housekeeping services

Amenities

- Premium mattress
- Desk, dressers and night tables
- Satellite TV in every room
- Baseboard heaters in each room
- Private bathroom with shower
- All-inclusive dining

Directions to Iosegun Lake Lodge from Grande Prairie:

1. Travel 200 km East and South of Grande Prairie to Fox
2. Creek Turn left (Northeast) onto Iosegun Lake Road
3. Travel 4.4 km on Iosegun Lake Road
4. The Lodge is located at the intersection of Kaybob Drive and Iosegun Lake Road

Lodge Coordinates:

GPS: 54.423486° -
116.783162° **LSID:** 10-03-063-19
W5

Book A Room With Us Today

openlodges@dexterra.com

Horizon North
1-866-305-6565
dexterra.com





Kobes Creek Lodge

Well-appointed accommodations serving natural gas projects in Northern BC.

Your crews face some of the most demanding working conditions imaginable. That's why Horizon North believes providing a comfortable, safe, friendly home away from home at Kobes Creek Lodge is critical to your operation.

When you stay at Kobes Creek Lodge, you can count on an exceptional guest experience from start to finish – no matter the length of your stay. From the expertly prepared hearty meals and take-away lunches to safe and quiet sleeping accommodations to amenities like the fitness centre and recreation room, we understand the importance of our facility in helping to drive peak performance and productivity for your team.

Overview

Located north of Fort St. John in the heart of the British Columbia Montney resource play, Kobes Creek Lodge is ideal for companies looking to minimize travel logistics and costs through accommodations that are convenient to their project site. A Horizon North-owned and operated Open Lodge, Kobes Creek features 240 Executive style rooms and three all-inclusive, nutritious meals prepared each day by our chefs on site.

Features

- Catered dining facility
- Fitness centre
- Recreation room
- Wireless internet
- Laundry facilities
- Housekeeping services

Amenities

- Bed with premium mattress
- Bathroom and shower
- Desk, dressers and night tables
- 32" flat screen with satellite TV
- Keyless room entry
- All-inclusive dining

Directions to Kobes Creek Lodge from Fort St. John:

1. From Fort St. John, travel North on Highway 29 for 64 km
2. Turn right onto Kobes Creek Road
3. Travel 46.5 km on Kobes Creek Road and turn right on Camp
4. Road Follow Camp Road for 5 km to Kobes Creek Lodge

Lodge Coordinates:

GPS: 56.375613° - 122.122454°

BC NTS: B 60-H / 094 B 08

Book A Room With Us Today

openlodges@dexterra.com

Horizon North
1-866-305-6565
dexterra.com





Montney 98 Open Lodge

Convenient accommodations serving projects north of Fort St. John.

Your crews face some of the most demanding working conditions imaginable. That's why Halfway River Horizon North Camp Services believes providing a comfortable, safe, friendly home away from home at Montney 98 Open Lodge is critical to your operation.

When you stay at Montney 98 Open Lodge, you can count on an exceptional guest experience from start to finish – no matter the length of your stay. From expertly prepared hearty meals and take-away lunches to safe and quiet sleeping accommodations, we understand the importance of our facility in helping to drive peak performance and productivity for your team.

Overview

Located north of Fort St. John in the heart of the British Columbia Montney resource play, Montney 98 Open Lodge is ideal for companies looking to minimize travel logistics and costs through accommodations that are convenient to their project site. Operated by Halfway River Horizon North Camp Services, the lodge features 342 Executive style rooms and three all-inclusive, nutritious meals prepared each day by our chefs on site.

Features

- Catered dining facility
- Take-away lunches
- Fitness centre
- Wireless internet
- Laundry facilities
- Housekeeping services

Amenities

- Bed with premium mattress
- Bathroom and shower
- Desk, dressers and night tables
- 32" flat screen with satellite TV
- Keyless room entry

Directions to Montney 98 Open Lodge from Fort St. John:

1. Travel North from Fort St. John on Highway 97 for 82 km
2. Turn left at the 5900 Radio Road (a highway sign is visible and turning lane is provided)
3. Travel on the 5900 Radio Road (RR 10) for approx. 2.3 km (KMs are marked and radio call is required)
4. Turn right to the Montney 98 Lodge

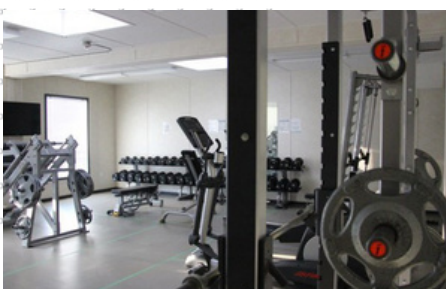
Lodge Coordinates:

GPS: 56.69375° -
121.759375° BC NTS: B 31-K /
094 A 12

Book A Room With Us Today

openlodges@dexterra.com

Halfway River Horizon North Camp
Services 1-866-305-6565
dexterra.com





Musreau Lodge

Convenient accommodations on Highway 40 south of Grande Prairie.

Your crews face some of the most demanding working conditions imaginable. That's why Horizon North believes providing a comfortable, safe, friendly home away from home at Musreau Lodge is critical to your operation.

When you stay at Musreau Lodge, you can count on an exceptional guest experience from start to finish – no matter the length of your stay. From the expertly prepared hearty meals and take-away lunches to safe and quiet sleeping accommodations to amenities like the fitness centre and recreation room, we understand the importance of our facility in helping to drive peak performance and productivity for your team.

Overview

Conveniently located off Highway 40 south of Grande Prairie, Musreau Lodge is ideal for companies looking to minimize travel logistics and costs through accommodations that are convenient to their project site.

A Horizon North-owned and operated Open Lodge, Musreau features 120 executive style rooms and 228 junior executive rooms, as well as three nutritious meals prepared each day by our chefs on site.

Features

- Catered dining facility
- Fitness centre
- Recreation room
- Wireless internet
- Laundry facilities
- Housekeeping services

Amenities

- Premium mattress
- Desk, dressers and night tables
- Satellite TV in every room
- Baseboard heaters in each room
- Private bathroom with shower
- All-inclusive dining

Directions to Musreau Lodge from Grande Prairie:

1. From Grande Prairie, travel south on Highway 40 for approximately 77 km.
2. Turn right on Husky Road and travel 0.5 km
3. Musreau Lodge in on your right

Lodge Coordinates:

GPS: 54.507148° - 118.714549°

LSD: 7-5-64-5 W6

Book A Room With Us Today

openlodges@dexterra.com

Horizon North
1-866-305-6565
dexterra.com





Sanataa Lodge

Convenient accommodations situated between Fort St. John and Dawson Creek.

Your crews face some of the most demanding working conditions imaginable. That's why Horizon North believes providing a comfortable, safe, friendly home away from home at Sanataa Lodge is critical to your operation.

When you stay at Sanataa Lodge, you can count on an exceptional guest experience from start to finish – no matter the length of your stay. From the expertly prepared hearty meals and take-away lunches to safe and quiet sleeping accommodations to amenities like the fitness centre and recreation room, we understand the importance of our facility in helping to drive peak performance and productivity for your team.

Overview

Located between Dawson Creek and Fort St John in the busy British Columbia Montney resource play, Sanataa Lodge is ideal for companies looking to minimize travel logistics and costs through accommodations that are convenient to their project site.

A Horizon North-owned and operated Open Lodge, Sanataa features 287 Executive style rooms and three nutritious meals prepared each day by our chefs on site.

Features

- Catered dining facility
- Fitness centre
- Recreation room
- Wireless internet
- Laundry facilities
- Housekeeping services

Amenities

- Premium mattress
- Desk, dressers and night tables
- Satellite TV in every room
- Baseboard heaters in each room
- Private bathroom with shower
- All-inclusive dining

Directions to Sanataa Lodge from Fort St. John:

1. Travel South from Fort St. John on Highway 97 for 37 km
2. At Braden Road #22, turn right and travel 13.6 km
3. At Sanataa Road, turn right and travel 15 km
4. At the access road for Sanataa Camp, turn left and travel for 0.2 km to Sanataa Lodge

Lodge Coordinates:

GPS: 55.928118° -
120.975284° **BC NTS:** A 19-L /
093 P 15

Book A Room With Us Today

openlodges@dexterra.com

Horizon North
1-866-305-6565
dexterra.com





Simonette Lodge

Well-appointed accommodations to help drive your team's performance.

Your crews face some of the most demanding working conditions imaginable. That's why Horizon North believes providing a comfortable, safe, friendly home away from home at Simonette Lodge is critical to your operation.

When you stay at Simonette Lodge, you can count on an exceptional guest experience from start to finish – no matter the length of your stay. From the expertly prepared hearty meals and take-away lunches to safe and quiet sleeping accommodations to amenities like the fitness centre and recreation room, we understand the importance of our facility in helping to drive peak performance and productivity for your team.

Overview

Located in the heart of the Kaybob region between Grande Prairie and Fox Creek, Simonette Lodge is ideal for companies looking to minimize travel logistics and costs through accommodations that are convenient to their project site.

A Horizon North-owned and operated Open Lodge, Simonette features 136 Jack and Jill rooms with semi-private washrooms, 30 executive style rooms equipped with full private washrooms, and three nutritious meals per day prepared by our chefs on site.

Features

- Catered dining facility
- Fitness centre
- Recreation room
- Wireless internet
- Laundry facilities
- Housekeeping services

Amenities

- Private sink in room
- Flat screen Satellite TV
- Double bed
- In-room refrigerator

Directions to Simonette Lodge from Grande Prairie:

1. Travel East from Grande Prairie on Highway 43 towards Valleyview
2. Turn right on Goodwin Forestry Road and travel 72 km to Canfor Road
3. Turn left on Canfor Road and travel 5 km to the Y intersection at 2000 Road
4. Turn left and follow to Km 2121
5. Turn right and travel 1 km to Simonette Lodge

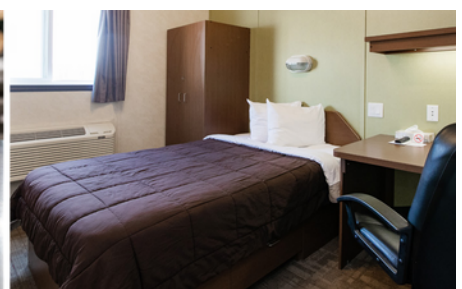
Lodge Coordinates:

GPS: 54.555272°-117.840315°
LSD: 10-22-64-26 W5

Book A Room With Us Today

openlodges@dexterra.com

Horizon North
 1-866-305-6565
dexterra.com





Wapiti Lodge

Well-appointed accommodations to help drive your team's performance and productivity.

Your crews face some of the most demanding working conditions imaginable. That's why Horizon North believes providing a comfortable, safe, friendly home away from home at Wapiti Lodge is critical to your operation.

When you stay at Wapiti Lodge, you can count on an exceptional guest experience from start to finish – no matter the length of your stay. From the expertly prepared hearty meals and take-away lunches to safe and quiet sleeping accommodations to amenities like the fitness centre and recreation room, we understand the importance of our facility in helping to drive peak performance and productivity for your team.

Overview

Located south of Grande Prairie, Wapiti Lodge features 450 Executive style rooms. Wapiti Lodge's rooms are well appointed with amenities including wireless internet, satellite TV, premium mattresses, full linen services and housekeeping. All-inclusive dining with three gourmet meals per day and full access to fitness and recreational facilities make staying at Wapiti Lodge a relaxing, yet productive experience.

Features

- Catered dining facility
- Fitness centre
- Recreation room
- Wireless internet
- Laundry facilities
- Housekeeping services

Amenities

- Premium mattress
- Desk, dressers and night tables
- Satellite TV in every room
- Baseboard heaters in each room
- Private bathroom with shower
- All-inclusive dining

Directions from Grande Prairie to Wapiti Lodge:

1. Travel South on Highway 40 to AB-666 to Grovedale
2. Turn Right on Township Rd 700
3. Turn Left on Range Road 65 (Bald Mountain Road); follow to Km 31.5
4. Turn Right on Wapiti Road; follow to Km 7.5
5. Turn Right on Four Road; Wapiti Lodge is 5.5 km ahead on right hand side

Lodge Coordinates:

GPS: 54.79558° - 119.00831°

LSD: 6-16-67-7 W6

Book A Room With Us Today

openlodges@dexterra.com

Horizon North
 1-866-305-6565
dexterra.com





Watson Open Lodge

Convenient accommodations serving projects in the Prince Rupert region.

Your crews face some of the most demanding working conditions imaginable. That's why Horizon North believes providing a comfortable, safe, friendly home away from home at Watson Open Lodge is critical to your operation.

When you stay at Watson Lodge, you can count on an exceptional guest experience from start to finish – no matter the length of your stay. From expertly prepared hearty meals and take-away lunches to safe and quiet sleeping accommodations, we understand the importance of our facility in helping to drive peak performance and productivity for your team.

Overview

Located outside of Prince Rupert, BC, near key projects in the region, Watson Lodge is ideal for companies looking to minimize travel logistics and costs through accommodations that are convenient to their project site. Operated by Horizon North in partnership with Coast Tsimshian Enterprises, the lodge features 150 Executive style rooms and three all-inclusive, nutritious meals prepared each day by our chefs on site.

Features

- Catered dining facility
- Fitness centre
- Recreation room
- Wireless internet
- Laundry facilities
- Housekeeping services
- In-house security cameras

Amenities

- Beds with premium mattress
- Private bathroom with shower
- Desk, dressers and night tables
- Flat screen satellite TV
- All-inclusive dining
- Custom sandwich program
- ATM and vending machines

Directions to Watson Lodge from Terrace Airport:

1. Take Dease Lake Hwy/BC-37 north for 5.8 km to BC-16 W
2. Follow BC-16 W for 135 km to Hwy 599 in Port Edward
3. Turn left onto Hwy 599 (signage will be for Port Edward) and follow for 2.7 km to Watson Lodge

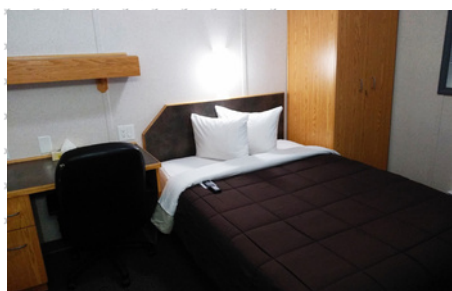
Lodge Coordinates:

GPS: 54.233651, -130.291042
BC NTS: A 84-K /103 J 01

Book A Room With Us Today

openlodges@dexterra.com

Horizon North in partnership with Coast Tsimshian Enterprises
dexterra.com





horizon north

OUTLAND

OYEP

dexterra



We've been serving North American clients for over 75 years. The companies that began independently, and now form Dexterra Group, have an outstanding record of supporting the infrastructure and built assets that play a vital role in our society. We bring the right teams with the right skills together – offering both experience and regional expertise so companies can operate their day to day, confidently and successfully.



807-345-3534 | dexterra.com | TSX: DXT



Scan the QR Code
to Contact Us